

SECTION 00003 – ADDENDUM NUMBER 5

DATE: **January 9, 2015**

TO: **ALL BIDDERS**

FROM: **CLARK C. BURRITT, PRINCIPAL ARCHITECT**
 CITY OF WORCESTER
 DEPARTMENT OF PUBLIC WORKS AND PARKS
 50 SKYLINE DRIVE
 WORCESTER, MA 01605

RE: **REGIONAL EMERGENCY COMMUNICATIONS CENTER**
 2 COPPAGE DRIVE, WORCESTER, MA 01603

THIS ADDENDUM FORMS A PART OF THE CONTRACT AND MODIFIES THE ORIGINAL DOCUMENTS DATED DECEMBER 11, 2014.

PART 1 - GENERAL

- 1.1** This addendum must be returned with plans and specifications (if not already returned) to have your deposit returned.
- 1.2** This addendum modifies, amends, and supplements the Contract Documents for the above referenced project. This addendum is hereby made a part of the Contract Documents by reference and shall be as binding as though inserted in locations designated hereunder.
- 1.3** Each general bidder shall be responsible for notifying all his non-filed sub-bidders and suppliers of the content of this addendum. No claim for additional compensation will be considered because of lack of knowledge of changes or modifications contained in this addenda.
- 1.4** Questions or requests for clarification shall be in writing, addressed to Jeremy C. Flansburg at **DEPARTMENT OF PUBLIC WORKS AND PARKS, ARCHITECTURAL DIVISION**, and may be sent to fax number: (508) 799–8188. Please include your name, phone number, and fax number with your fax.
- 1.5** Part 2 of this addendum indicates revisions to the Project Manual.
- 1.6** Part 3 of this addendum indicates revisions to the Drawings.
- 1.7** Part 4 of this addendum indicates clarification to Contractors Questions.

PART 2 - SPECIFICATIONS

- 2.1 ADDENDUM 3, PART 4 – TABULATION OF FILED SUB-BIDS**
SECTION 099123 PAINTING: Revise JOHN W. EGAN CO, INC. as follows:

JOHN W. EGAN CO, INC. P.O. Box 600070 3 Border Street Newtonville, MA 02460 (617) 244 - 6390		BID PRICE: BID WITHDRAWN
---	--	---

- 2.2 SECTION 012200 – UNIT PRICES:** Revise Article 1.04 UNIT PRICES, paragraph B. 1. and B. 2. as follows:

1. Carry in the Base Bid a quantity of (31) 50 KIP piles at exterior wall columns. Provide a depth of 10’-0”.
2. Carry in the Base Bid a quantity of (21) 50 KIP piles at interior columns. Provide a depth of 10’-0”.

Reinforced concrete pile caps with anchor bolts are the work of Section 033000 – Cast-in-Place Concrete.

Pile extensions for depths greater than 10’-0” are by change order.

Modify description of unit prices on Form for General Bid accordingly.

- 2.3 SECTION 012300 - ALTERNATES: Part 3.1 B.:** Add the following to the description of Base Bid:

Base bid work includes all utilities including new domestic water service in addition to relocating existing water service as required to be utilized for fire protection.

Base bid work includes all site lighting.

- 2.4 SECTION 033000 – CAST-IN-PLACE CONCRETE, 3.11 MISCELLANEOUS CONCRETE ITEMS:** Add paragraph C. as follows:

C. Pile Caps: Provide reinforced concrete pile caps as follows:

1. Provide 4 ft. x 4 ft. x 1 ft. thick reinforced concrete pile caps at each interior column location. Reinforce with #5 rebar 8 inches o.c. each way, top and bottom.
2. Provide 6 ft. x 2 ft. x 1ft. thick reinforced concrete pile caps at each column location adjacent to foundation walls. Reinforce with #5 rebar 6 inches o.c. across the 24-inch width, top and bottom. Tie with #3 ties at 12 inches o.c.
3. Set anchor bolts and leveling plates as required by metal building structure.

- 2.5 SECTION 087100 – DOOR HARDWARE:** Revise paragraph 2.3 B. 4. b. as follows:

- b. Interior Hinges: Brass or bronze with stainless-steel pin body and brass or bronze protruding heads for painted finish.

2.6 SECTION 087100 – DOOR HARDWARE, 2.14 FINISHES: Omit paragraphs D. 1. and D. 2. Revise paragraph D. 3. as follows:

- 3. BHMA 693: Satin black powder coat or paint over aluminum, steel, nickel, brass or bronze base metal.

2.7 SECTION 123530 – RESIDENTIAL CASEWORK, 1.2 SUMMARY: Delete paragraph B. 1. Appliances are provided by the Owner as indicated by N.I.C. on the drawings.

PART 3 - DRAWINGS

3.1 SKETCHES ADD the following sketch (attached) to revise currently issue drawings:

- 1. **SKA-02 WINDOW TYPE CA REVISION** Revise all drawings accordingly.

3.2 DRAWING A8.1: Change window types CA & DA storefronts to curtainwall. Provide provide 1-inch insulating glass in lieu of glass currently indicated.

3.3 DRAWING C2 DEMOLITION PLAN – Drawing shows demolition required for Base Bid and Alternate 1. For base bid, demolish only the paving and berm to be replaced in the base bid. Trenching and patching for utilities and site lighting are work of the Base Bid. Clearing and grubbing for fencing is work of Alternate 1.

3.4 DRAWING C5 GRADING AND UTILITY PLAN- Note for Subsurface infiltration system:

Revise quantity of Storm Tech SC-310 Chambers from nine (9) to twenty (20), along with accompanying bedding stone and filter fabric.

3.5 DRAWING A8.1: Change doors E2 & E4 from “ALUM” to “STL”.

PART 4 - CONTRACTOR QUESTIONS

4.1 QUESTION: Regarding the site lighting, all site lights are clearly shown on E1.0 outside of the dotted line shown on C4.1 for base bid site work. Is the excavation, patching, etc... required for the site lighting to be included in the base bid or the alternate price? I ask because section 012300 “alternates” specifically calls for each item such as catch basins, lot striping, etc... but doesn’t include site lighting. It only includes the electrical for the gates. Also, it appears the low filed sub bidder didn’t carry for the site lighting in their alternate price either.

ANSWER: *Yes, the GC work necessary to facilitate the base bid site lighting is work of the base bid. This includes patching of the existing paving in the case Alternate 1 is not taken and the existing paving remains in place.*

4.2 QUESTION: A hardware vendor asks: FH Spec Section 087100-Par 2.14 Finishes-Par D –We are unsure of what finish they are asking for. They list 4 different finishes and we have never had to

deal with the first 3 (black over chrome). We are figuring all hardware available in 32D, Stainless Steel and balance as dull chrome. Please confirm

ANSWER: *The intent is a satin black finish on door hardware. See 2.3 and 2.4 above.*

- 4.3 QUESTION: Section 084413 –Types CA & DA not storefront CA glazed with ¼” tempered & DA glazed with ½” laminated glass. Is this correct? Is Insulated glass Req’d?

ANSWER: *See 3.1 and 3.2 above.*

- 4.4 QUESTION: Depth of storefront not given. Is 2” x 4 ½” acceptable or 2 “ x 6” thermal or do you want 2 ½” x 7 ½” curtainwall?

ANSWER: *Provide 6-inch deep curtain wall for window types DA and CA.*

- 4.5 QUESTION: Elev. 4/A6.2 DR 16A shows a sidelite. Door schedule notes type 2 frame w/ no sidelite, which is correct.

ANSWER: *No sidelite. See addendum 1.*

- 4.6 QUESTION: Elev 6/ A6.2 notes a sidelite at DR 01E. Elev 4/A6.1 notes no sidelite, plan A1.2 shows no sidelite. Which is Correct?

ANSWER: *No sidelite.*

- 4.7 QUESTION: Doors E2 & E4 are noted as aluminum doors w/ hollow metal frames. Are these doors part of the metal building package Section 133419?

ANSWER: *Yes.*

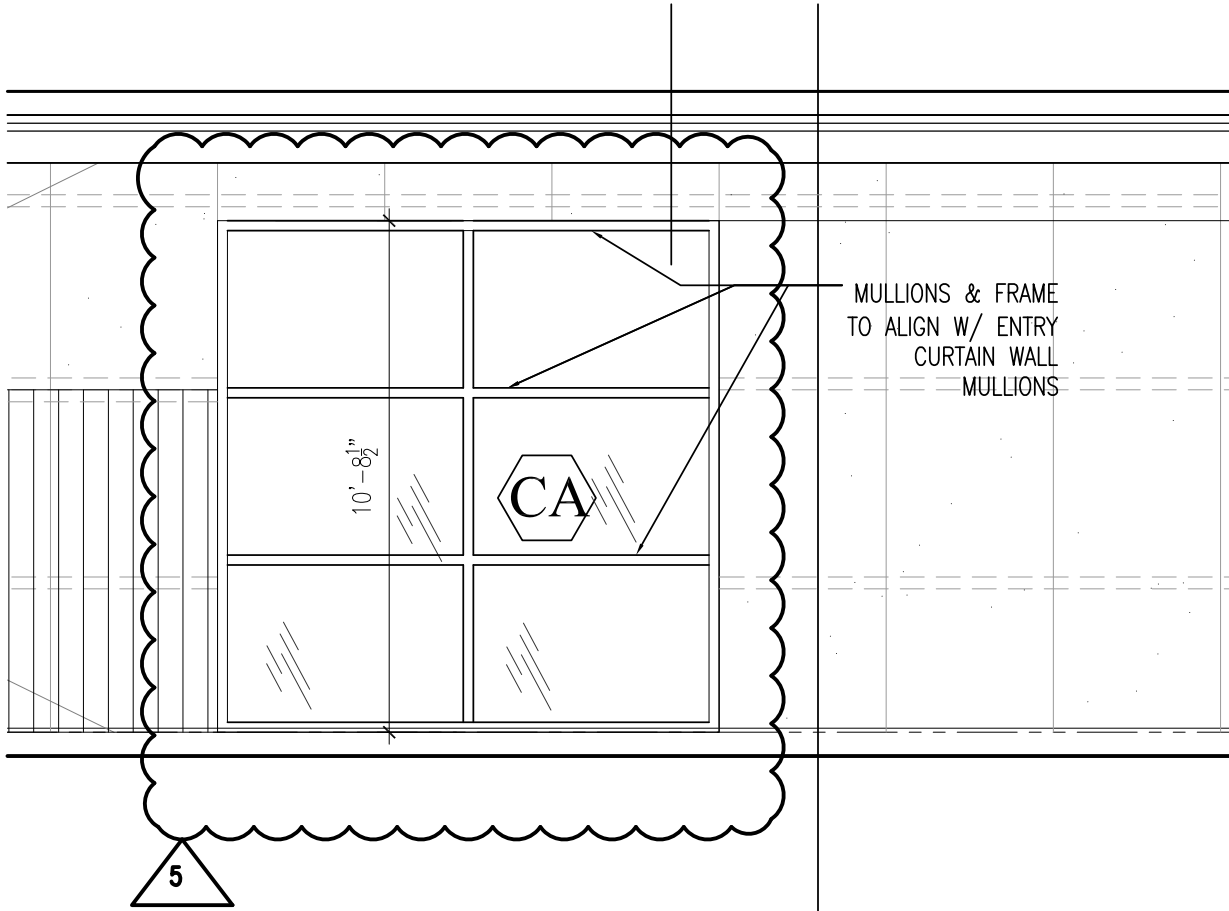
- 4.8 QUESTION: Please confirm that DR E1 w/ hardware is by Section 084413 Glazed Aluminum Curtainwalls?

ANSWER: *Yes.*

- 4.9 QUESTION: Who owns the masonry shown on the architectural drawings?

ANSWER: *The General Contractor shall provide masonry locker bases as shown. Provide Jandris & Sons, Inc. block as selected by the Architect from the manufacturer’s full line, or equal. Provide tinted mortar, color as selected by the Architect.*

END OF ADDENDUM NUMBER 5



MULLIONS & FRAME
TO ALIGN W/ ENTRY
CURTAIN WALL
MULLIONS

10'-8 1/2"



5



**DEPARTMENT OF
PUBLIC WORKS
AND PARKS**

ARCHITECTURAL SERVICES DIVISION
50 SKYLINE DRIVE, WORCESTER, MA 01605

SCALE: 1/4" = 1'-0"
DATE: 01/09/15
REMARKS:
ISSUED VIA
ADDENDUM #5

PROJECT TITLE:
**REGIONAL EMERGENCY
COMMUNICATIONS CENTER**
2 Coppage Drive, Worcester, MA 01603
DRAWING TITLE:
WINDOW TYPE CA REVISION

SHEET NUMBER:
SKA-02