

SECTION 000003 – ADDENDUM NUMBER 3

DATE: MARCH 31, 2017
TO: ALL BIDDERS
FROM: JAY P. VIAMARI, P.E.
TIGHE & BOND, INC.
53 SOUTHAMPTON ROAD
WESTFIELD, MA 01085

**PART 1 - RE: 2016 ARP GROUP 2: CHANDLER COMMUNITY SCHOOL AND GERALD
CREAMER CENTER WINDOW, DOOR, AND BOILER REPLACEMENT AND
ASSOCIATED REPAIRS**

**THIS ADDENDUM FORMS A PART OF THE CONTRACT AND MODIFIES THE ORIGINAL
DOCUMENTS DATED MARCH 15, 2017.**

PART 1 - GENERAL

- 1.1** This addendum must be returned with plans and specifications (if not already returned) to have your deposit returned.
- 1.2** This addendum modifies, amends, and supplements the Contract Documents for the above referenced project. This addendum is hereby made a part of the Contract Documents by reference and shall be as binding as though inserted in locations designated hereunder.
- 1.3** Each general bidder shall be responsible for notifying all his non-filed sub-bidders and suppliers of the content of this addendum. No claim for additional compensation will be considered because of lack of knowledge of changes or modifications contained in this addenda.
- 1.4** Questions or requests for clarification shall be in writing, addressed to Jeremy C. Flansburg at **DEPARTMENT OF PUBLIC WORKS AND PARKS, ARCHITECTURAL DIVISION**, and may be sent to fax number: (508) 799-8188 OR flansburgj@worcesterma.gov. Please include your name, phone number, and fax number with your fax or e-mail.
- 1.5** Requests for additional walk-thru inspections or time to investigate the existing conditions of the building can be arranged on an individual basis. Please call the Department of Public Works and Parks at (508)799-8588 to confirm.
- 1.6** Part 2 of this addendum indicates revisions to the Drawings.
- 1.7** Part 3 of this addendum indicates Clarifications to Contractor Questions.

PART 2 - DRAWINGS

2.1 COVER SHEET

- A. REPLACE the cover sheet with revised cover sheet, attached.

2.2 DRAWING GPD-101

- A. REPLACE drawing GPD-101 with revised drawing GPD-101, attached.

2.3 DRAWING GP-101

- A. REPLACE drawing GP-101 with revised drawing GP-101, attached.

PART 3 - CONTRACTOR QUESTIONS

3.1 I am confirming that the security screens on these projects are not on all window units and that the security screens on listed units cover the entire window opening (including fixed sections in operable window openings). Furthermore, the Chandler school does not have security screens at all but will have insect screens on exterior/ interior per the window operation. All project-out windows will have interior aluminum screens with wickets and fixed windows will not have security screens at all. Is this correct?

- A. *The Gerald Creamer Center will have security screens at all exterior window locations. Security screens will not be required over aluminum panels. Insect screens will not be required where security screens are provided.*
- B. *The Chandler Community School will have security screens at all exterior window and storefront assemblies. Security screens will not be required over aluminum panels. Insect screens will not be required where security screens are provided.*

3.2 Per FSB section 08 00 01 – Metal Windows, sections 08 41 13, 08 44 00, 08 45 23, and 08 51 13, each section states that “The Contractor” shall include the cost of all commissioning requirements in their contract price. Who would be “The Contractor” on the project? Who will own the cost for field testing for each of the sections listed.

- A. *The Metal Window filed sub-bidder will be responsible for all commissioning requirements associated with the metal windows filed sub-bid. This includes all commissioning testing for aluminum windows and storefront assemblies.*

3.3 Sections 08 41 13, 08 44 00, 08 45 23, and 08 51 13 list Section 01 91 19 – Building Envelope Commissioning. Where is Section 01 91 19?

- A. *Section 01 91 19 was included in the bid set of specifications; however it was numbered “019119”.*

3.4 The drawings GE-101 shows one of the Type PA fixtures with a note “New pendant mounted led light fixture (see note 2)(Type of 10) but there are only eight shown. The type EX2 has a note

(Typ of 4) with only 3 on the drawing. Are the counts per the notes or the actual fixtures shown on the drawings?

A. *The count should be as shown on the drawings. GE-101 (PA) has 8 lights. GE-101 (EX2) has 3 lights.*

3.5 Drawing CME-101 again Type PA note reads “New pendant mounted led light fixture (see note 2)(Typ of 7) but there are only five shown on the drawing. Are the counts per the notes or the actual fixtures shown on the drawings?

A. *The count should be as shown on the drawings. CME-101 (PA) has 5 lights.*

END OF ADDENDUM NUMBER 3

**ISSUED FOR BIDDING
NOT FOR CONSTRUCTION**

**2016 ARP
Group 2:
Chandler
Community
School and
Gerald Creamer
Center MSBA
Accelerated
Repair Program**

Window, Door, and
Boiler Replacement
and Associated
Repairs

Worcester,
Massachusetts

VERIFY SCALE
BAR IS 1 INCH ON
ORIGINAL DRAWING
0 1 INCH
IF NOT ONE INCH ON
THIS SHEET, ADJUST
SCALES ACCORDINGLY

1	3-2017	ADDENDUM 3
0	3-2017	ISSUED FOR BIDDING
MARK	DATE	DESCRIPTION

PROJECT NO: M1215-7
DATE: 2017/03/15
FILE: GPD-101_DEMO_FL_01.dwg
DRAWN BY: RTP
CHECKED: MPW
APPROVED: JPV

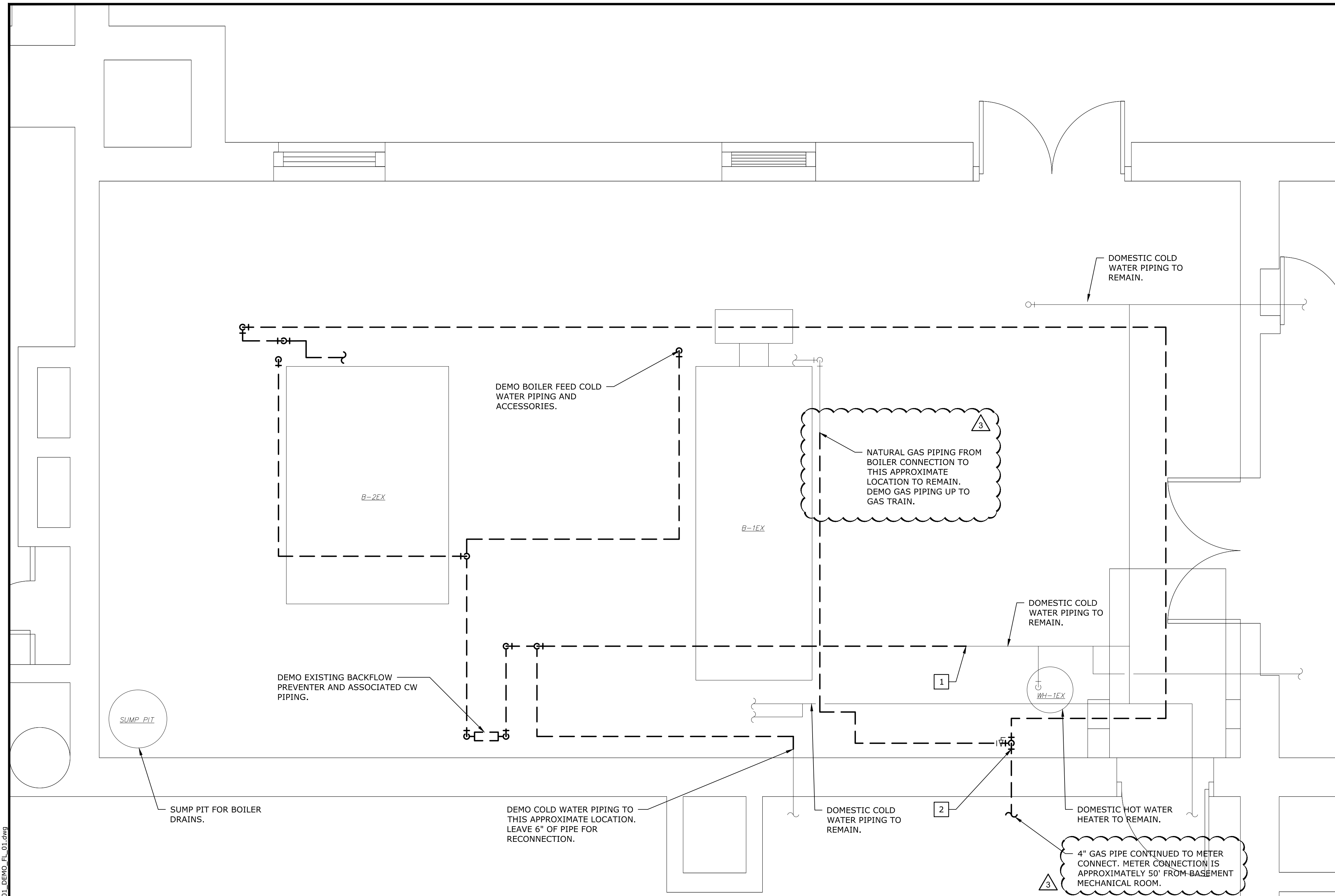
**PLUMBING
DEMOLITION PLAN**

SCALE: 1/2" = 1'-0"

GPD-101

GENERAL NOTES:

1. REMOVE NATURAL GAS PIPING AND DOMESTIC COLD WATER PIPING WITHIN THE MECHANICAL ROOM AS NOTED OR TO APPROXIMATELY 6" PRIOR TO WALL AND CEILING PENETRATIONS FOR RECONNECTION. PROVIDE TEMPORARY CAPS ON ALL SYSTEMS.



BASEMENT MECHANICAL ROOM PLAN

1/2" = 1'-0"

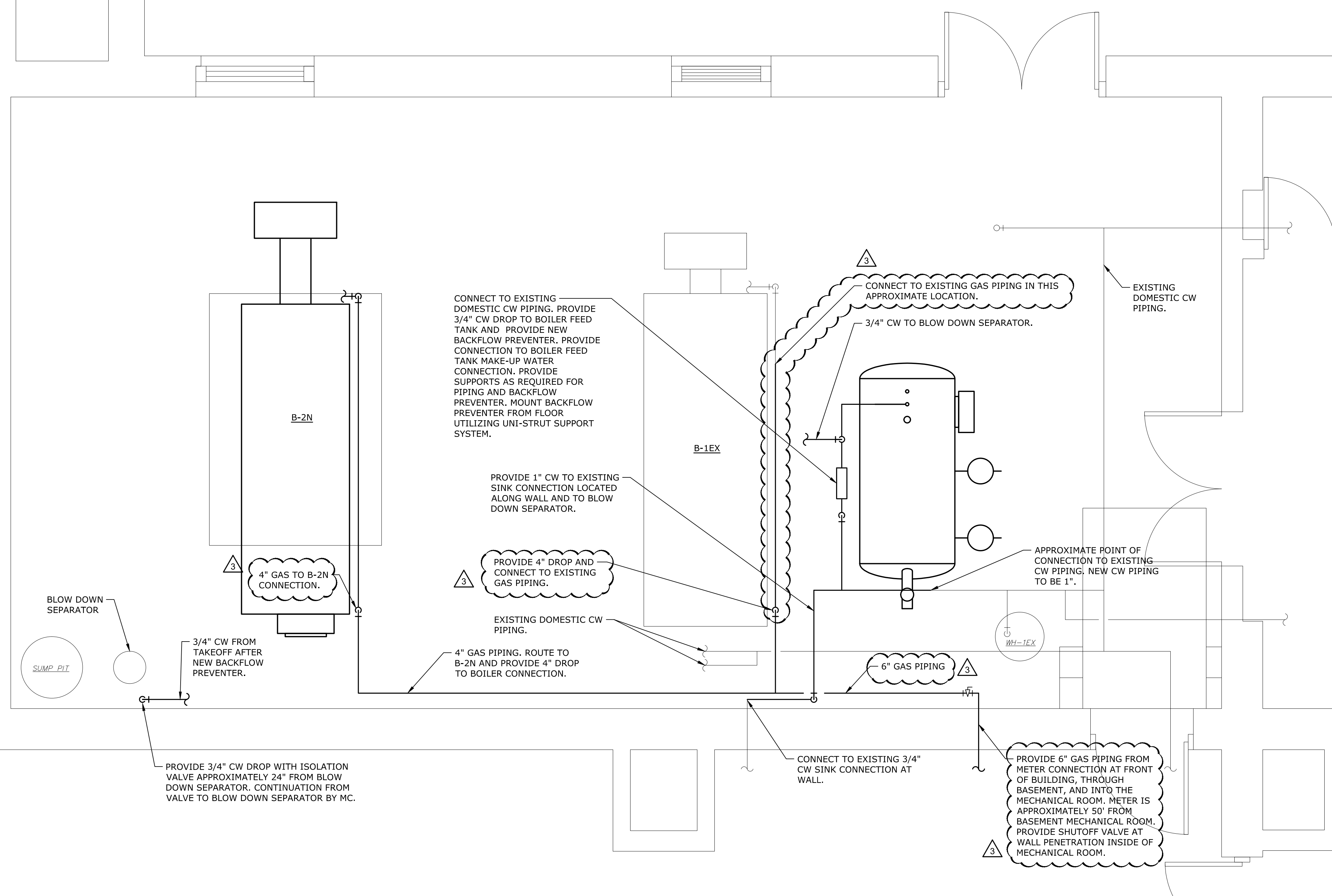
DEMOLITION KEYED NOTES:

- 1 DISCONNECT, REMOVE, AND DISPOSE COLD WATER FEED PIPING FROM POINT NOTED TO BOILERS.
- 2 DISCONNECT, REMOVE, AND DISPOSE OF NATURAL GAS PIPING FROM METER CONNECTION AT THE FRONT OF THE SCHOOL, THROUGH THE BASEMENT, AND TO BOILERS OR THE POINT NOTED.

**ISSUED FOR BIDDING
NOT FOR CONSTRUCTION**

GENERAL NOTES:

1. PROVIDE BACKFLOW PREVENTER ON DOMESTIC COLD WATER (CW) SYSTEM AND PROVIDE PIPING TO BOILER FEED TANK CONNECTION.
2. PROVIDE INSULATION AND JACKETING ON ALL DOMESTIC HOT AND COLD WATER PIPING, INCLUDING EXISTING PIPING.
3. PROVIDE NATURAL GAS PIPING TO BOILERS. PROVIDE ANY REQUIRED VENT PIPING FROM BOILER GAS TRAIN. PROVIDE DIRT LEG AT BOTTOM OF DROPS TO BOILERS. PROVIDE GROUND JOINT UNION AND ISOLATION VALVE FOR NEW BOILER CONNECTION.
4. PROVIDE COORDINATION WITH THE GAS UTILITY COMPANY TO UPGRADE SERVICE TO THE BUILDING AND UPGRADE METER AS REQUIRED.



BASEMENT MECHANICAL ROOM PLAN
1/2" = 1'-0"

**2016 ARP
Group 2:
Chandler
Community
School and
Gerald Creamer
Center MSBA
Accelerated
Repair Program**

Window, Door, and
Boiler Replacement
and Associated
Repairs

Worcester,
Massachusetts

VERIFY SCALE
BAR IS 1 INCH ON ORIGINAL DRAWING
0 1 INCH
IF NOT ONE INCH ON THIS SHEET, ADJUST SCALES ACCORDINGLY

1	3-2017	ADDENDUM 3
0	3-2017	ISSUED FOR BIDDING
MARK	DATE	DESCRIPTION

PROJECT NO: M1215-7
DATE: 2017/03/15
FILE: GP-101_PROP_FL_01.dwg
DRAWN BY: RTP
CHECKED: MPW
APPROVED: JPV

**MECHANICAL ROOM
PLUMBING FLOOR PLAN**

SCALE: 1/2" = 1'-0"

GP-101

Last Saved: 3/30/2017 2:43pm By: ABS
Plotted On: Mar-30-2017 2:43pm By: ABS
Tighe & Bond: J:\M1215\07 Worcester Public Schools\Drawings_Figures\AutoCAD\Group 2\GP-101_PROP_FL_01.dwg